

# Brighton's Elm Tree Collection

## Children's Activity Map

Name

Age

School



Graphic Design: Jessica Keene and Jennifer Whitworth – University of Brighton Graphic Design Students  
Illustration: Gustav Freij – University of Brighton Illustration Student

### Word Search

- Can you find these words?
- 1. Preston Twins
  - 4. Dutch
  - 7. Klemmer
  - 2. Elm
  - 5. Weeping
  - 8. Himalayan
  - 3. Tree
  - 6. Wych
  - 9. Brighton

Z	S	W	Y	C	H	J	M	M	A	C	P	E	H
T	V	E	L	M	F	B	O	X	K	P	R	Q	I
K	U	E	B	T	L	W	G	H	I	S	S	W	M
H	L	P	A	R	C	Q	U	T	Y	N	X	B	A
D	Y	I	S	O	J	M	B	N	I	I	O	Z	L
U	O	N	Z	F	Z	E	E	W	P	D	K	T	A
T	M	G	Y	A	I	R	T	C	Z	Z	L	B	Y
C	Z	X	F	M	K	N	Q	S	O	E	E	M	A
H	A	U	X	N	O	R	V	D	Q	P	M	L	N
E	B	K	N	T	D	Y	J	X	R	C	M	O	W
P	P	W	S	R	K	A	B	T	S	D	E	R	M
T	A	E	N	V	S	U	O	M	F	W	R	Q	A
B	R	I	G	H	T	O	N	C	R	J	B	A	S
P	P	R	S	Q	A	L	D	V	V	T	R	E	E

### Facts about Elm trees:

- 1 The Preston Twins date back more than 400 years and are the largest English Elms in the World!
- 2 'Clone 28' Elm is one of the largest trees in the British Isles, and can only be found in Brighton & Hove
- 3 The Himalayan Elm is very rare in the British Isles but Brighton has 60!
- 4 We have more than 700 mature Dutch Elms in Brighton & Hove
- 5 There are 15 Elm Trees in Brighton which you won't be able to find anywhere else in the World!

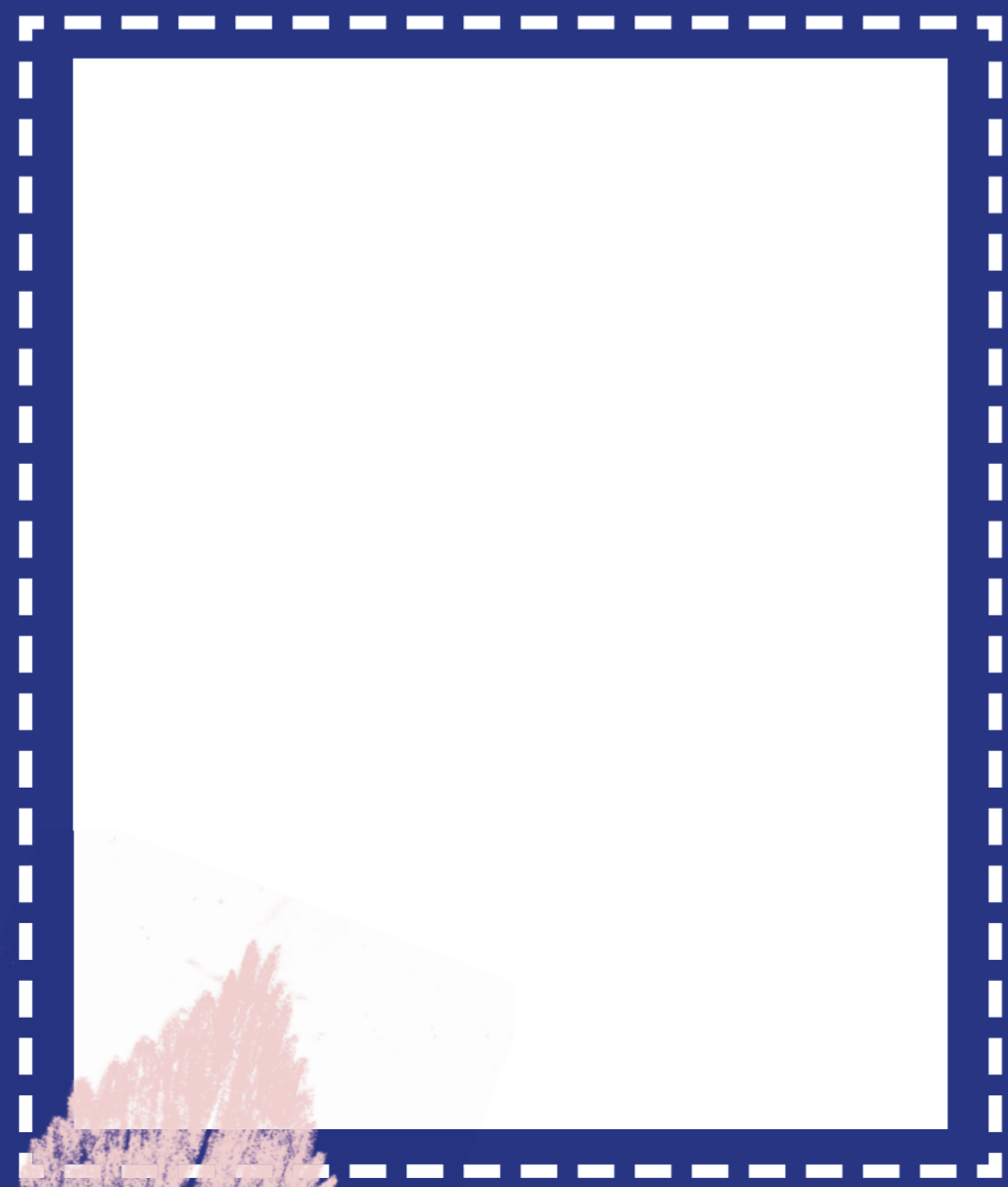
### Why Elm Trees are important

- 1 Trees give out oxygen which is vital for us and wildlife
- 2 Lots of local wildlife use the trees for their homes
- 3 These trees have helped Brighton keep a high level of animal diversity!
- 4 The Elm trees in Brighton connect us to local people who were historically important

### Draw a leaf from an Elm tree!



### Make a rubbing from the bark of an Elm



I am an Elm Tree Bark Beetle! I love eating the bark of the Elm Trees



I am a White-letter Hairstreak Butterfly! I am an endangered species and I live in the 'Preston Twins'



Find a creepy-crawly to draw!

### Can you find...

- A Roman hat
- The number 260
- The Preston Twins
- Pavilion Garden Cafe
- Himalayan Elm
- King William III of Orange
- A Royal Crown
- A witch's broom